

FINANCIAL STATEMENTS

2007/2008 In-kind Contributions

Agriculture and Agri-Food Canada - PFRA	\$ 2,350.00
Alberta Agriculture and Rural Development	100,325.00
Alberta Conservation Association	450.00
Alberta Environment	43,200.00
Alberta Environmental Farm Plan	2,450.00
Alberta Pork Producers	2,100.00
Alberta Sustainable Resource Development	6,750.00
Cardston County	3,100.00
Chinook Health	6,210.00
City of Lethbridge	5,287.50
County of Lethbridge	1,750.00
Department of Fisheries and Oceans Canada	6,660.00
Ducks Unlimited Canada	6,750.00
Members at Large	16,574.00
MULTISAR	4,000.00
Municipal District of Pincher Creek	135.00
Nature Conservancy of Canada	1,225.00
Partners in Habitat Development	6,000.00
Southern Alberta Community of Environmental Educators (SACEE)	50.00
Southern Alberta Group for the Environment (SAGE)	6,745.00
St. Mary River Irrigation District	2,025.00
Taber Irrigation District	1,980.00
Town of Cardston	455.00
Town of Picture Butte	500.00
UMA Engineering Ltd.	175.00
University of Lethbridge	4,860.00
Total	\$ 225,896.50

2007/08 Cash Contributions

Agriculture and Agri-Food Canada - PFRA	\$ 500.00
Alberta Agriculture and Rural Development	56.44
Alberta Environment	250,000.00
Alberta Irrigation Projects Association	500.00
City of Lethbridge	24,757.00
County of Lethbridge	3,276.90
Amy Douglas	100.00
Ducks Unlimited Canada	500.00
Farm Credit Canada	200.00
Kairos	50.00
Leavitt Irrigation District	142.89
Lethbridge Northern Irrigation District	3,000.00
Leron Torrie Farms	50.00
Magrath Irrigation District	200.00
Municipal District of Pincher Creek	992.70
Municipal District of Ranchland No. 66	250.00
Municipal District of Taber	500.00
Municipal District of Willow Creek No. 26	1,601.03
Palliser Environmental Services Ltd.	500.00
Raymond Irrigation District	1,234.68
Sandalack & Assoc.	20.00
St. Mary River Irrigation District	4,990.89
Taber Irrigation District	2,302.95
Town of Claresholm	1,110.00
Town of Coaldale	1,853.10
Town of Coalhurst	447.90
Town of Picture Butte	477.60
Town of Vauxhall	320.70
UMA	350.00
University of Calgary	20.00
University of Lethbridge	1,000.00
Village of Barnwell	164.40
Village of Cowley	67.50
Vulcan County	1,200.00
Walter Duncan Gordon Foundation	5,000.00
Ron Winter	50.00

Total Revenue \$ 311,063.58

BOARD OF DIRECTORS

The Oldman Watershed Council Board of Directors is comprised of 13 representatives from various organizations and 4 members at large. If there are any issues that you would like discussed at the meetings, contact Stephanie at stephanie@oldmanbasin.org at least two weeks prior to a meeting. The 2007/08 Board included the following members, each serving a 2-year term:

BOARD REPRESENTATIVES



Duane Climenhaga
Member at Large



Cheryl Dash
Provincial Government



Cheryl Fujikawa
Not-for-Profit Organization



Keith Francis
Member at Large



Gerhardt Hartman
Member at Large



Brian Hammond
Rural Municipalities



Andy Hurly
Academia



Lorne Fitch
Member at Large



Bruce Konynenbelt
Agricultural Producers



Leda Kozak
Executive Assistant



Barbara Lacey
Municipalities



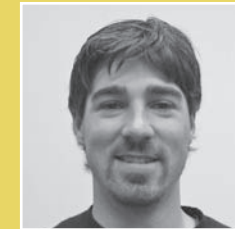
Stephanie Palechek
Executive Director



Shane Petry
Federal Government



Ron Renwick
Irrigation Sector



Sean Robison
Health

Vacant Positions:

- Vacant - Industry
- Vacant - First Nations



Don Watson
Not-for-Profit Organization

OWC ANNUAL GENERAL MEETING

The 4th Annual General Meeting was held on March 12th, 2007 at the Lethbridge Lodge. Concurrent sessions were held during the morning. The theme of these sessions centred on water management and water research related to the Oldman River basin. OWC business was conducted for the remainder of the morning including financial statements, working team updates and Board elections. Two new Members at Large were nominated. A warm welcome goes to Anne Stevick and Glen French who will be joining our Board of Directors for a two-year term.

In the afternoon, a panel session was held. Members of stewardship groups, the academic community, and members of the OWC Board of Directors were represented on this panel and fielded questions from the audience about "Making a Difference in Your Watershed". There was plenty of energetic discussion from both the audience and the panel.

This year, the Council held an essay contest for middle school students. Students were asked to write a short essay on how they could make a difference in their watershed. Michelle Walter, Arnold Walter and Emilee Kaupp all submitted excellent essays and were presented with awards for their efforts. The day concluded with a wonderful presentation by keynote speaker Simon Jackson, the founder of the Youth Spirit Bear Coalition and a silent auction.

Thank you to all who volunteered their time to make this year's AGM a success.

www.oldmanbasin.org

www.oldmanbasin.org



ANNUAL REPORT 07 08

The Oldman Watershed Council (OWC)

is a not-for-profit organization that is working in partnership with communities and residents to improve the Oldman River Watershed. The Council consists of members who live or work within the Watershed. These members provide leadership and guidance in watershed planning and management, water quality monitoring, and stewardship promotion.

The Oldman River Watershed, located in South-western Alberta, extends north to High River, east to Grassy Lake, west to the Crownsnest Pass in the Rocky Mountains, and dips south across the 49th parallel into Glacier International Peace Park in Montana. Unlike many other basins, the Oldman Watershed, located in a semi-arid ecosystem, is strongly dependent on its snow-fed headwaters for its annual flow. The main tributaries of the Oldman River are the Livingston, Crownsnest, Little Bow, Castle, Waterton, Belly and St. Mary's Rivers, which in turn are supplied upstream by numerous small streams, springs and wetlands. The Oldman River joins the Bow River to create the South Saskatchewan River upstream from Medicine Hat.

Our watershed is home to 161,400 rural and urban residents. There are about 70 small towns, villages and hamlets, as well as the City of Lethbridge. The watershed encompasses 28,000 km² and has an average population density of just less than 6 people per km².

Land-use activities in the headwaters of the Oldman basin can have substantial impacts on the health of the entire watershed. The western portion of the watershed consists of fescue grasslands while the

central and eastern portions consist of dryer mixed grass areas and some native prairie vegetation. This same region is characterized by concentrated urban and industrial development, dry land farming and intensive livestock agriculture. About 33% of the watersheds' land cover is agricultural, 29% is forested and 17% is native vegetation.

The Oldman Watershed Council integrates its activities through knowledge, research, partnerships and education as they relate to water management, water quality, and land-use practices in the following key areas:

- By providing responsible information and input into watershed management planning activities that reflects the needs of stakeholder in the Oldman Watershed.
- Increasing awareness and understanding of the Oldman Watershed among residents and stakeholders and encouraging commitment and responsibility to water quality and water use.
- Refining and expanding knowledge of water-related conditions and processes throughout the Watershed.
- Promoting sustainable land use practices that protect the Watershed.
- Reducing contaminants, such as microbes, nutrients and pesticides, that enter surface water and groundwater in the Oldman Watershed.

Oldman Watershed Council

100, 5401 - 1Ave. S.
Lethbridge, AB T1J 4V6
Phone (403) 382-4239
Fax: (403) 381-5765
Email: stephanie@oldmanbasin.org
www.oldmanbasin.org



Data Collection and Integration Team

The Data Collection and Integration (DC&I) Team collects and interprets data on water quality and land use within the basin. The team is focused on collecting and analyzing water quality data and determining its relationship with the physical and land use characteristics of the Basin.

Southern Rockies Watershed Project

The DC&I Team provided financial support to the Southern Rockies Watershed Project led by Dr. Uldis Silins with the University of Alberta. The project is a study looking at the effects of the Lost Creek Forest Fire of 2003. Six basins are being monitored for precipitation, snowpack, water production, water quality, and aquatic ecology.

Ground and Surface Water Vulnerability Densification

The DC&I Team supported Livio Fent, with Alberta Sustainable Resource Development, in a Ground and Surface Water Vulnerability Densification project to apply the vulnerability process to the Lower Little Bow sub-basin using higher density data. The results will be an improved groundwater vulnerability map, using the Lower Little Bow as a pilot watershed.

Oldman River Water Quality Monitoring

Each year the Team creates a Water Quality index map for the Oldman Basin which illustrates the most current water quality information in the Oldman River Basin.. The map is based on data regarding pathogens, algae, and macrophytes.

Oldman Watershed GIS (Incorporating Strahler Codes)

The Oldman Watershed GIS was a project supported by Alberta Sustainable Resource Development for a more detailed delineation of the Oldman River Basin watershed. The project entailed a Strahler Stream Order which is used to define stream size based on a hierarchy of its tributaries.

Urban BMP Team

The Urban Beneficial Management Practice (BMP) Team is currently working on within the large urban centre of Lethbridge and other smaller communities to bring awareness of storm-water quality issues, drought tolerant landscaping, and responsible pesticide use. Their objectives are to define, implement and evaluate a public education program designed to improve stormwater quality.

Home and Garden Show

Every year the Urban Team hosts a booth at the Home and Garden Show in Lethbridge. The display focuses on individual actions at home and how they impact stormwater and river health. This year's booth had a draw to win 1 of 2 rain barrels.

Municipal Leadership

Finding from the past survey (2004) and workshop (2006) are continuing to influence municipalities. The OWC is a key stakeholder in Lethbridge's Environmental Policy and Plan to reduce the city's impact on the environment.

Yellow Fish Road

In the summer of 2007 youth in Lethbridge and Cardston painted yellow fish on storm drains to remind residents that run off goes directly into the river.

A competition in Lethbridge challenged youth groups to paint the most fish. The winning team was announced at a pizza party for all participants. The winners received swim/skate combo passes. In Lethbridge there were 83 youth participants, 183 storm drains painted, and 704 door hangers given out.

Great Garden Search

The Great Garden Search is to showcase environmentally friendly gardens in Lethbridge. Xeriscape principles are being applied to transform one typical yard with mostly lawn into a Xeriscaped garden. The transformation of this yard will be documented on a website and showcased at a garden tour. Other Xeriscaped yards will also be showcased through signage, brochures and on the website.



Communications and Outreach Team

The Communications and Outreach Team was formed to update the basin residents, partners, and members of the OWC's activities within the basin through workshops, annual reports, a website, and quarterly newsletters.

The Team works closely with the Board of Directors and the Executive Director, on consistency and coordination of Oldman Watershed Council messages and promotion. They also promote the Council at tradeshows, conferences, and through demonstration sites such as the Water-Wise Garden at Wilson Middle School.

Ongoing Projects

The Communications and Outreach Team continued to work on ongoing projects including: the upkeep of the website, putting together the annual report and quarterly newsletters, and planning the Annual General Meeting and Stakeholders' Meeting and Tour.

Promotional Items

This year, the promotional items ordered were the OWC booklets, pens, magnets, bookmarks and t-shirts.

Constructed Wetland Interpretive Signs

In June 2007, the Communications and Outreach Team unveiled the Constructed Wetland Interpretive Signs at the SunRidge Community located in west Lethbridge. There were a series of 10 signs that explained the benefits of a wetland in an urban community.

Water-Wise Garden

The Communications and Outreach Team spent their final summer weeding the Water-Wise Garden at Wilson Middle School in 2007. The OWC was pleased to turn the management of the garden over to the staff and students. The garden looks great and will be a wonderful teaching tool for years to come. A teacher's manual has been drafted and is in final review.



State of the Watershed Team

The State of the Watershed team was formed to initiate work on a report that will adopt the watershed approach identified in the Alberta Water for Life Strategy. The report will be used to understand the current health of the Oldman River Watershed, to ensure collaborative and educated decision-making and to identify where future research is required.

The State of the Watershed Team is continuing work on the State of the Watershed Report. Expect to see the finished report release in the fall of 2009.

SPECIAL THANKS!
To the volunteers that have worked with us throughout the year.



Rural Team

The Rural Team works directly with rural stakeholders in the Oldman Watershed by providing technical support and financial assistance to help stewardship workshops and initiatives provide a link to the OWC board, other teams, and urban stakeholders regarding rural issues, concerns, and initiatives within our watershed.

Holding the Reins Summit

On January 22, 2008, the Rural Team hosted their annual Holding the Reins: Landowners' Summit in Fort Macleod. The 1-day workshop is geared towards rural landowners and watershed groups. The day also provides an opportunity for rural watershed groups to share experiences and network. There were over 120 participants, the majority of which were rural landowners and managers. Highlights of the day included:

- Unveiling of the Chief Mountain Study, a cumulative effects study for the southwestern portion of Alberta.
- Presentation from the Blackfoot Challenge, an effective watershed management and cooperation in Montana.
- Landowner and Watershed Stewardship Group updates – Castle Crown, Bee Hive Association, Livingston Landowners Group, SALTS, and the South Porcupine Stewardship Association.
- The day ended with an excellent dinner and a presentation on Cottonwoods and Climate Change from the keynote speaker, Dr. Stewart Rood with the University of Lethbridge.

Supporting the Alberta Environmental Farm Plan

For the past 2 seasons, the Rural Team has supported the Alberta Environmental Farm Plan Company in helping to sponsor an Environmental Farm Plan workshop within municipalities in the Oldman Watershed.

Funding Watershed Tours

One of the objectives of the Rural Team is to increase the understanding and knowledge of local watersheds. To help accomplish this, the Team assists and sponsors at least one AESA initiated local watershed tour annually.

In 2007, the Rural Team sponsored the County of Lethbridge's Nutrient Management workshop and tour. There were 47 participants at the workshop/tour last September. After the workshop in the morning, the group toured the Battersea Drain.

In 2008, the Team will continue to support local watershed tours, with the possibility of hosting a multi-day tour to look at local Watershed Group innovation and demonstration sites.

Funding for Rural Workshops and Initiatives

To help assist Watershed Groups in funding events and/or meetings, the Rural Team has been providing a small funding grant that is easy to access and hopefully makes stewardship group events a success!. Contact your local AESA conservation coordinator or the OWC for more information.

Over the past 2 years the team has funded a number of events ranging from field days and tours to meetings regarding landuse in the watershed, and the impacts of oil and gas development on producers.

